

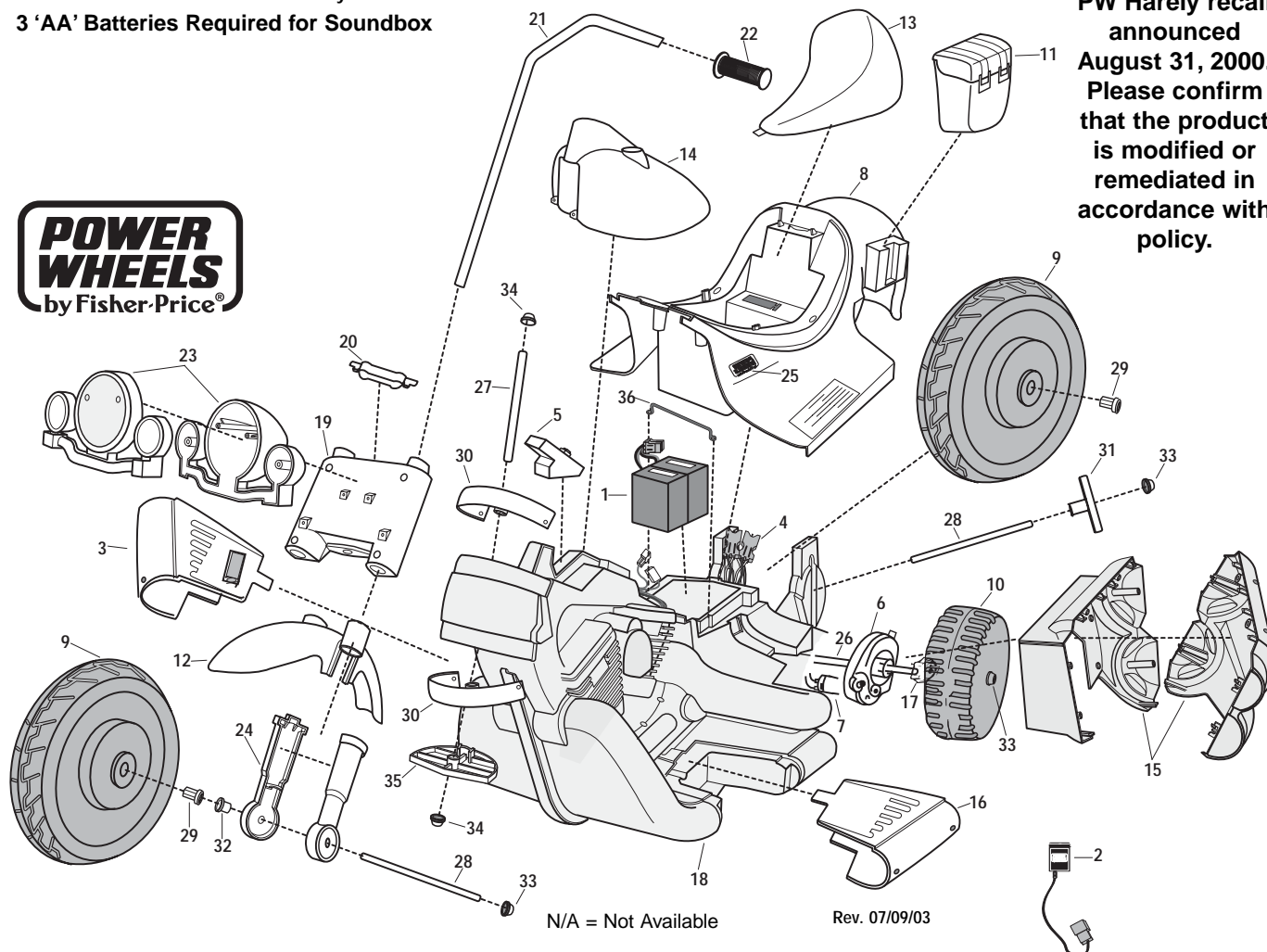
Age Range: 3-7 Yrs.
 Weight Limit: 65 Lbs.
 Surfaces: Hard & Grass
 Speed: 2.5 / 3.5 MPH Forward
 Colors: Black Body
 Chrome Detail
 Intro: 9-24-99 U.S.
 Suggested Retail: \$699.99
 Box Dimensions: 40" x 20" x 25"
 35 Lbs.
 Warranty: One Year Vehicle
 6 Months Battery



74298-9993 Limited Edition Harley Davidson® Motorcycle

Harley Dealerships & FAO Schwartz
 Advanced Series Non H.E. 12 Volt

This product is affected by the PW Harely recall announced August 31, 2000. Please confirm that the product is modified or remediated in accordance with policy.



Item No.	Description	Part No.	Qty.	Item No.	Description	Part No.	Qty.	Item No.	Description	Part No.	Qty.
Working / Electrical Parts											
1	6 Volt Battery	00801-0712	1	15	Exhaust Set N/A(chrome)	74298-9169	1	32	Bushing (round / black)	74550-2689	1
2	12 V Charger	00801-0973	1	16	Ftbd / Left N/A (chrome)	74298-6249	1	33	.437 Cap Nut	0801-0226	6
3	Ftbd Assembly (chrome N/A)	74298-9239	1	17	Driver	73233-2239	2	34	.354 Cap Nut	0801-0604	3
When sending the footboard assm please order instruction #74290-0922 for consumer											
4	<u>Wiring Harness Assembly</u>	<u>74290-9799</u>	1	18	Frame Set N/A(chrome)	74298-6219	1	35	Steering Stop	74298-2369	1
5	Soundbox	74290-9559	1	19	Fork (upper)N/A	74298-2349	1	36	Battery Retainer	74290-4419	1
6	#7 Motor Gearbox Assm.	00968-2901	2	20	Fork Cover (chrome)N/A	74298-6389	1				
7	<u>Motor w/Pinion</u>	<u>74290-9539</u>	2	21	Handlebar Set (chrome)N/A	74298-9029	1				
Plastic / Other Parts											
8	Body (N/A)	74298-210A	1	22	Handgrip	74290-2399	2				
9	Large Wheel	74290-2159	2	23	Headlight Assm N/A chrome	74298-9289	1				
10	Drive Wheel (small)	74290-2269	2	24	Shock St (4 pc N/A.) chrome	74298-9329	1				
11	Saddle Bag	74290-2129	2	25	PW Emblem (chrome) N/A	74298-9069	2				
12	Fender N/A	74298-213A	1								
13	Seat	74290-2309	1								
14	Gas Tank N/A	74298-214A	1								
Hardware / Metal Parts											
N/A = Not Available											
Rev. 07/09/03											
Parts Not Shown											
Main Decal Sheet N/A 74298-0310 1											
Small Chrome Dec N/A (tank/fend) 74298-6019 1											
Bubb Decal single frame label N/A 74298-0320 1											
Literature Bag N/A 74298-9019 1											
Owner's Manual N/A 74298-0920 1											
Small Parts Bag N/A 74298-9259 1											
Hardware Bag 74290-9279 1											
Large Parts Bag (N/A) 74298-9249 1											
Gearbox W/Out Motor <u>00968-2801</u> 1											
Control Switch 00801-0873 2											
#8 x 3/4" Plastite Screw 0912-8001 55											

Bold and Underlined parts are to be purchased and installed by Service Centers only. These items may not be sold directly to consumers by Service Centers or Fisher-Price.